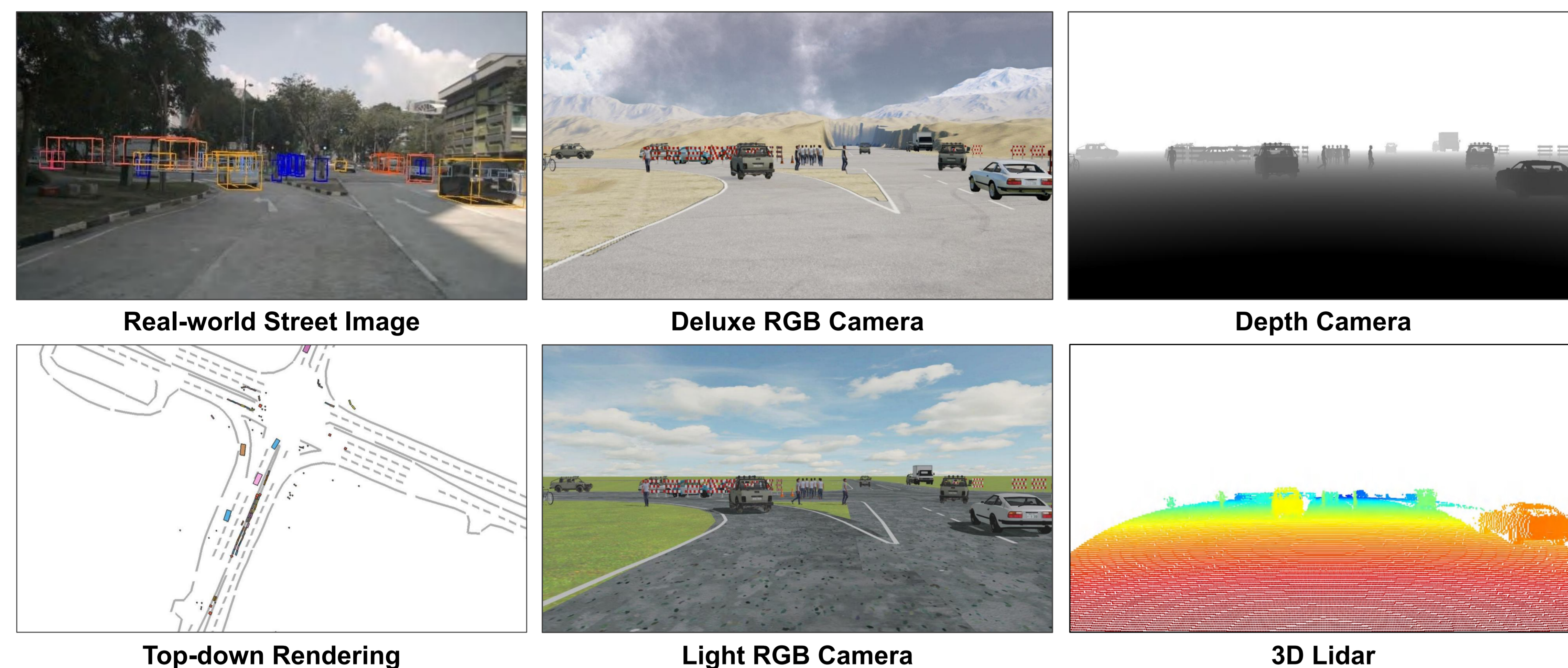


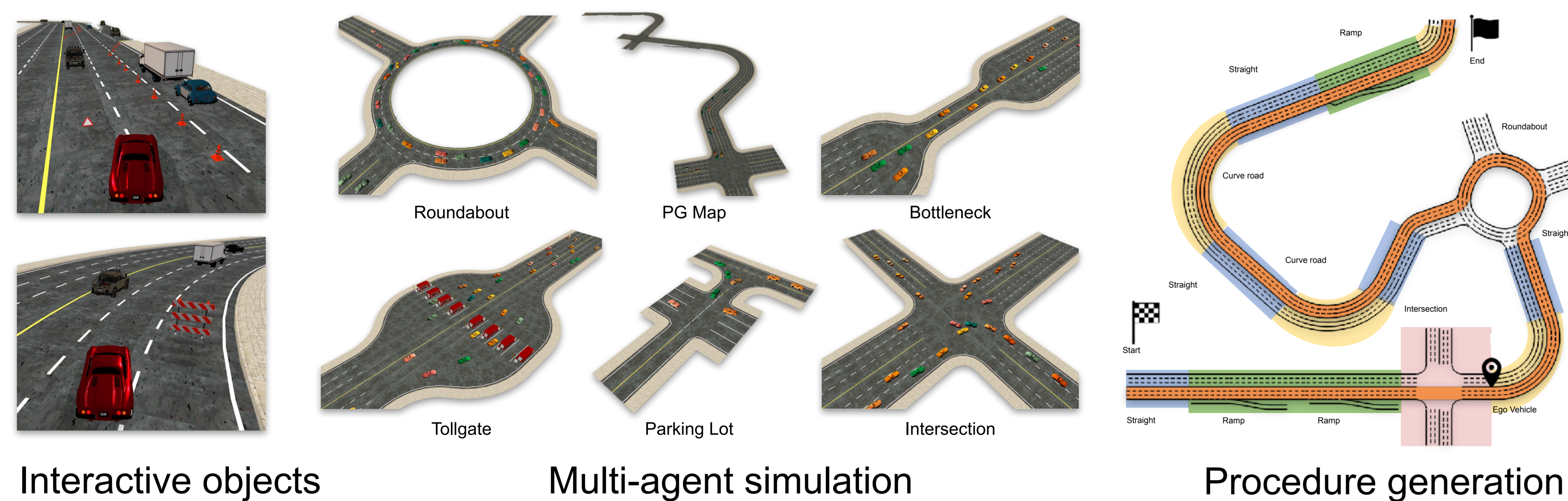
## Infrastructure Overview

- A lightweight and flexible driving simulator for research



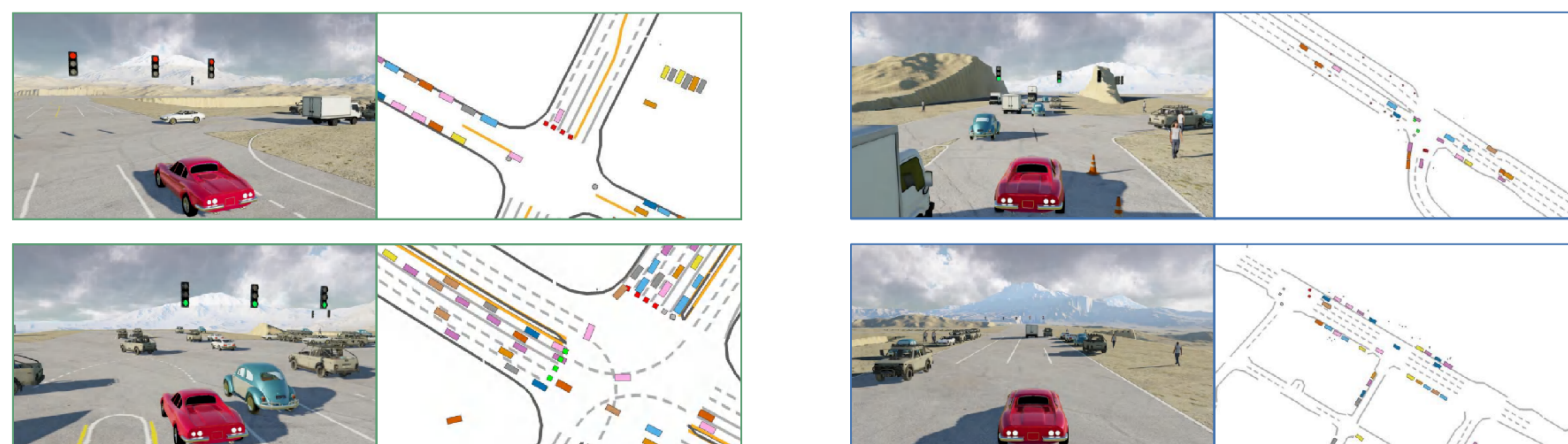
Statistics: Downloads: 14,389, Github stars: 447, Citations: 92

- Multiple simulation environments



- ScenarioNet: diverse traffic scenario data from real-world (NeurIPS'23)

500-hour replays from Waymo Open dataset, 1500-hour replays from NuPlan dataset, and more

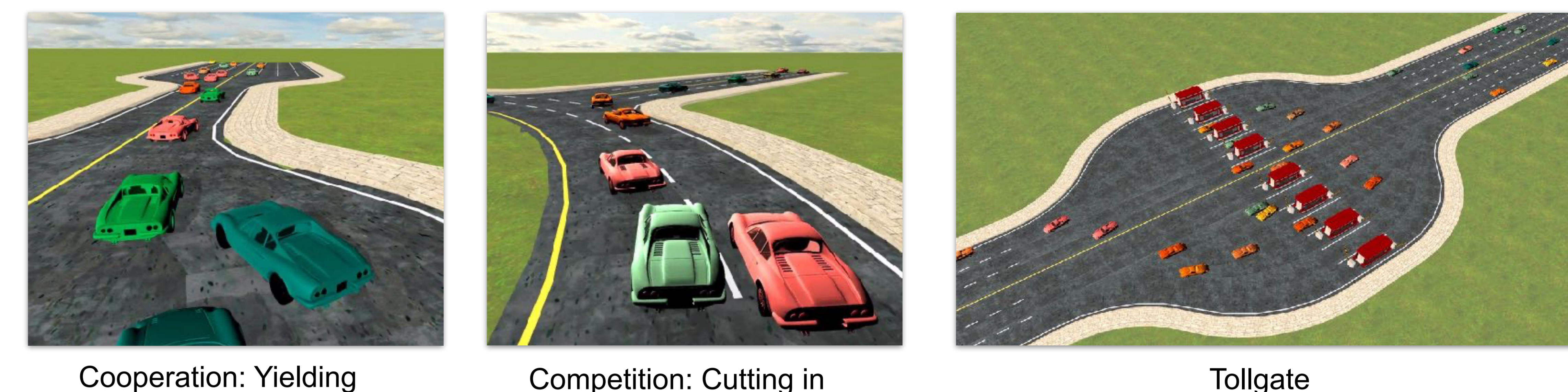


Traffic scenarios from Waymo Open dataset

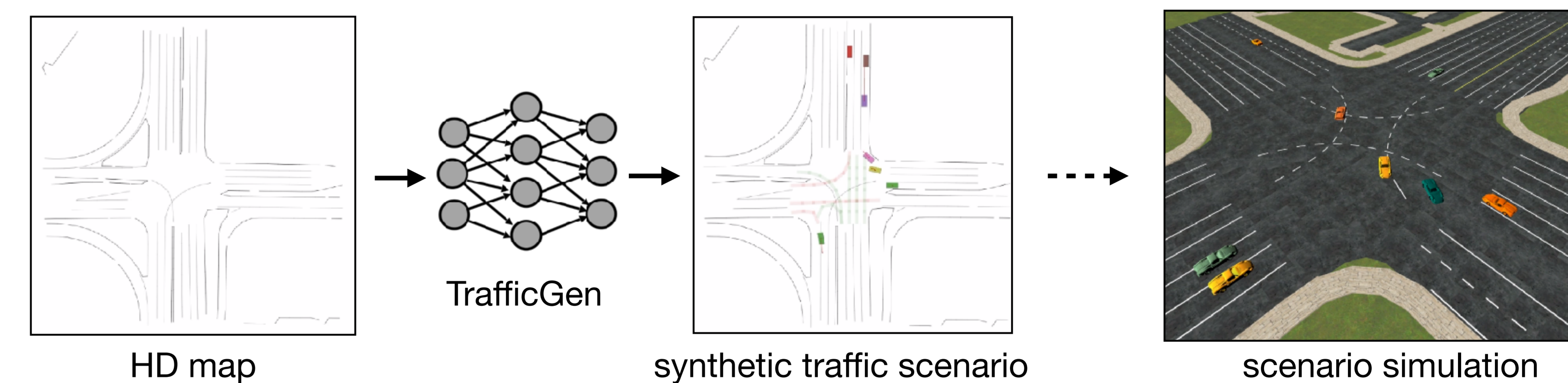
Traffic scenarios from NuPlan dataset

## Project Examples

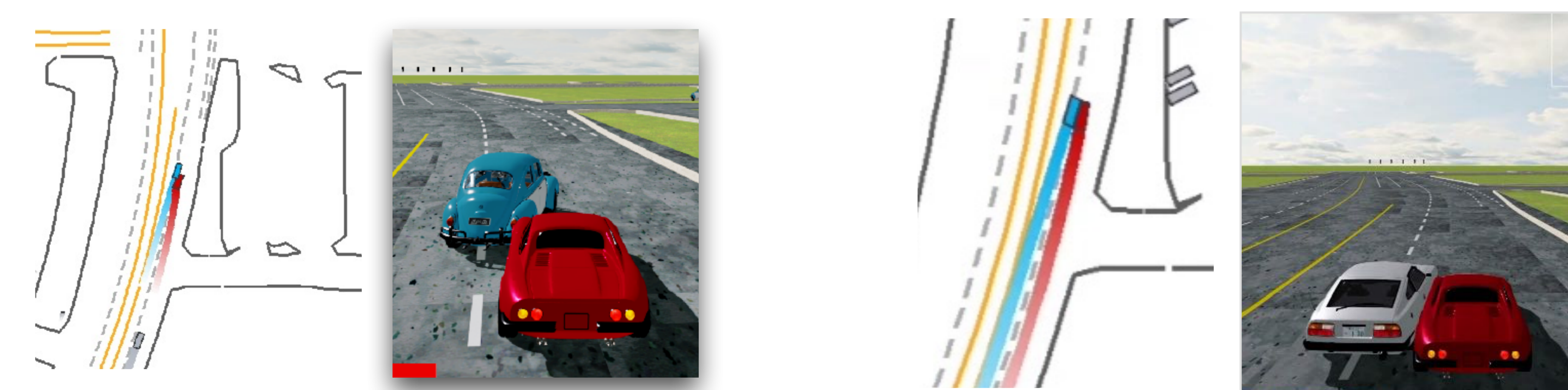
- Simulating traffic via multi-agent reinforcement learning



- Learning to generate diverse traffic scenarios (ICRA'23)



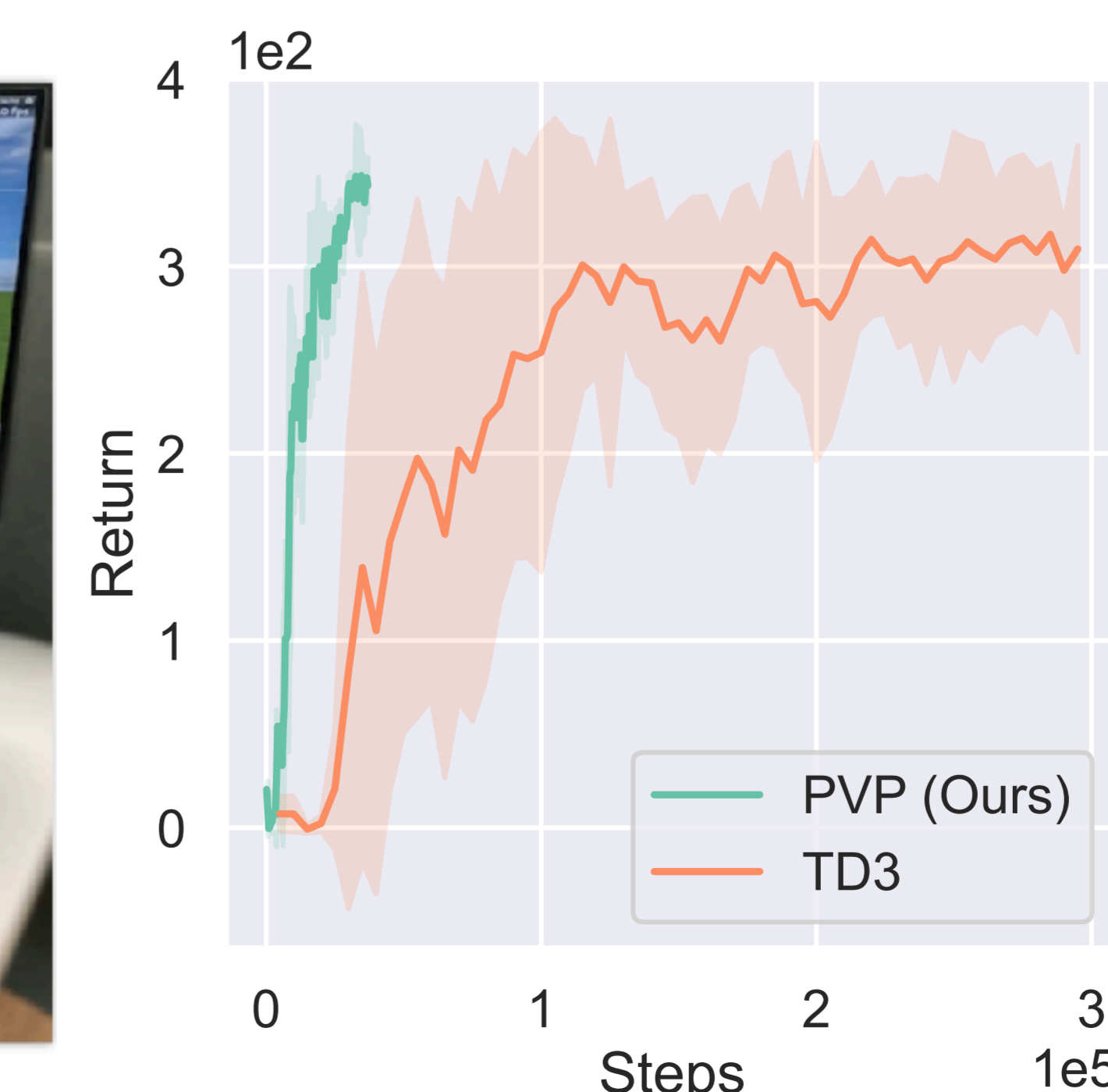
- AI safety through simulating accident-prone scenarios (CoRL'23)



- Human-in-the-Loop reinforcement learning (NeurIPS'23)



Human Interface



High learning efficiency

Code and papers: <https://metadriverse.github.io>

